



GMT MONTHLY MEMBERSHIP PROGRESS REPORT

Results as of: 2/28/2019

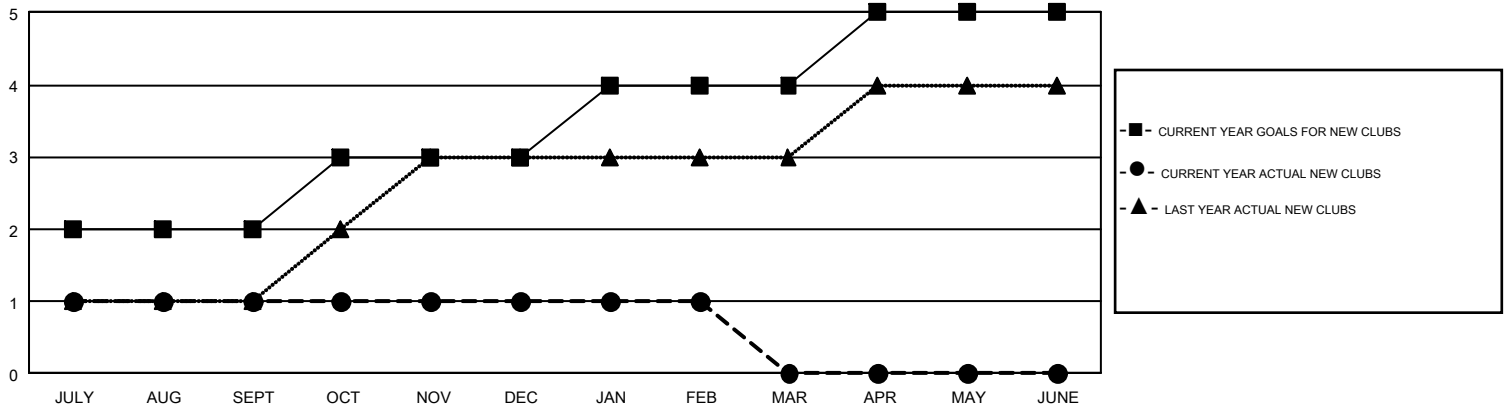
GMT Constitutional Area 5, Group G

GMT: TERESA MANN

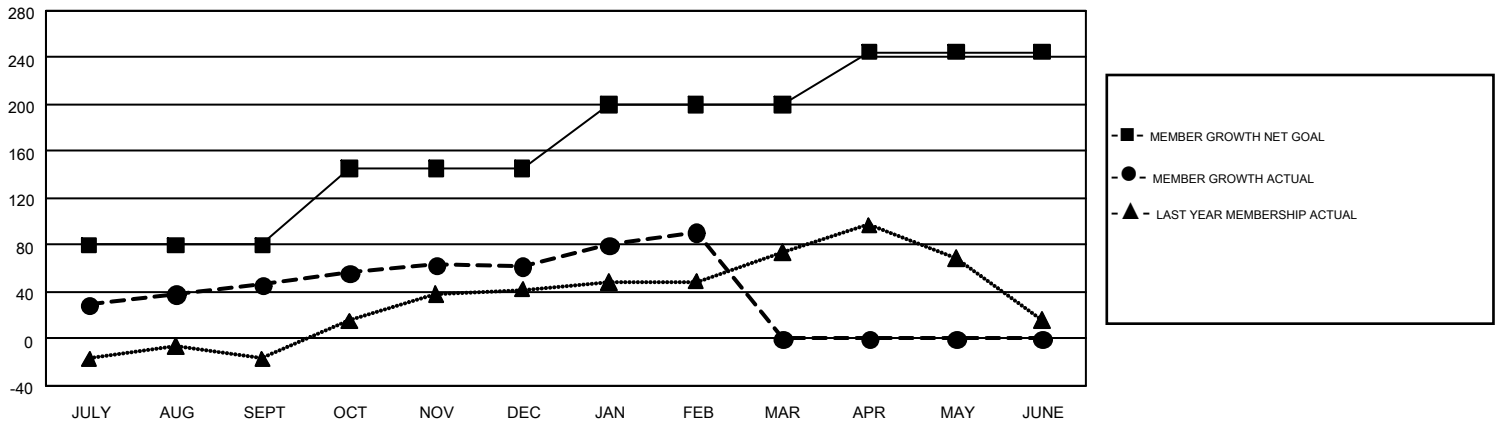
REPORT DOES NOT INCLUDE CLUBS IN UNDISTRICTED AREAS.

Clubs				Members			
RESULTS FOR 2018-2019				RESULTS FOR 2018-2019			
QUARTER	NEW CLUB GOAL	NEW CLUBS	DROPPED CLUBS	QUARTER	MEMBER GROWTH NET GOAL	MEMBER GROWTH ACTUAL	DROPPED MEMBERS ACTUAL (including transfers)
JULY/AUG/SEPT	2	1	0	JULY/AUG/SEPT	80	143	86
OCT/NOV/DEC	1	0	0	OCT/NOV/DEC	65	58	41
JAN/FEB/MAR	1	0	0	JAN/FEB/MAR	55	52	19
APR/MAY/JUNE	1	0	0	APR/MAY/JUNE	45	0	0

GOALS AND ACTUAL NEW CLUBS CUMULATIVE



GOALS AND ACTUAL MEMBERS CUMULATIVE



DROPPED CLUBS: 0	62 CLUBS OF 91 ADDED 1 OR MORE NEW MEMBERS	<u>GENDER DISTRIBUTION</u>	
<u>DROPPED MEMBERS</u>		MALE	1,630 (71.24%)
DECEASED	2	FEMALE	658 (28.76%)
CLUB CANCELLED	0	TOTAL FAMILY UNIT MEMBERS 64	
OTHER	144	FAMILY MEMBERS PAYING HALF DUES 35	
TOTAL	146		

[CLICK HERE FOR CUMULATIVE MEMBERSHIP DATA](#)